

 **HermanMiller**

Action Office® System



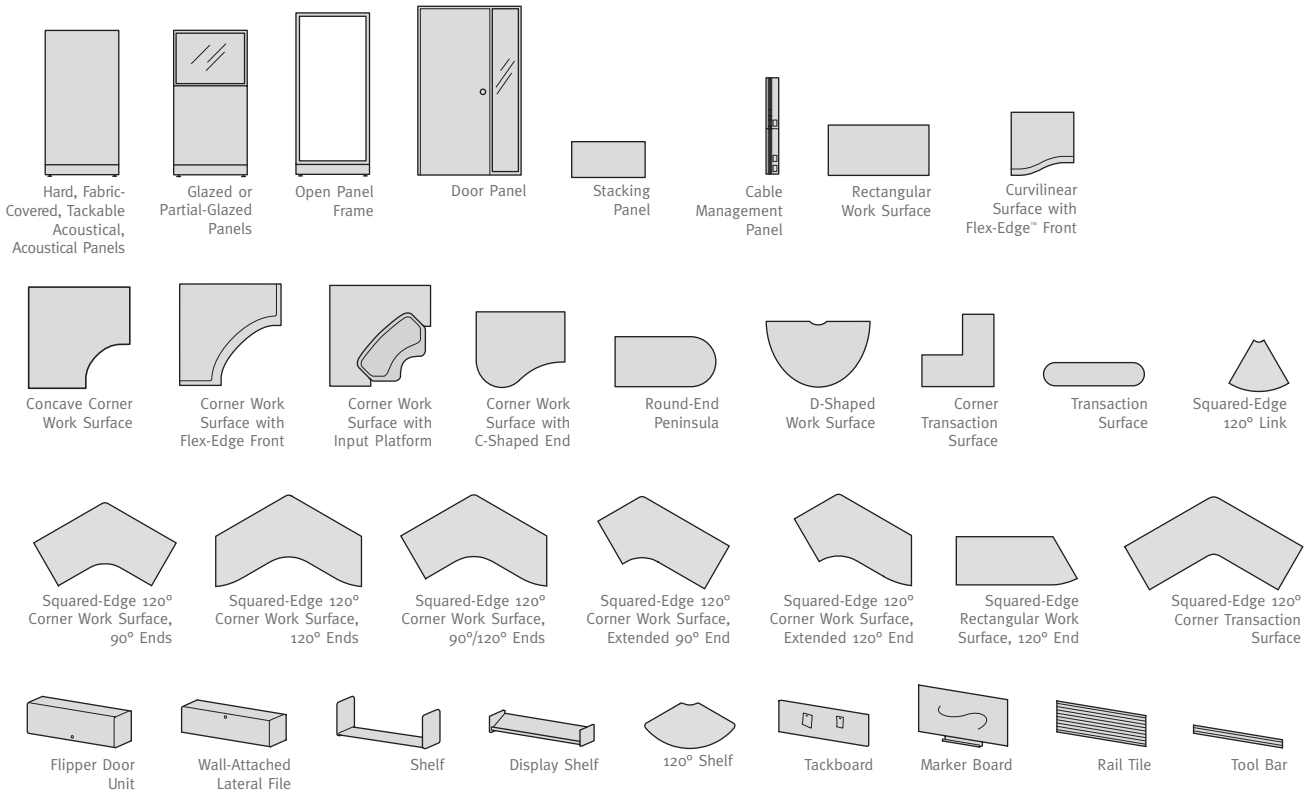
PROVEN PERFORMANCE

Good ideas—really good ideas—stick around. Case in point: the Action Office system. In 1968, Herman Miller introduced it as the world's first open-plan office furniture system. Today, Action Office is still a really good idea—a practical choice that's working hard in offices around the world. From 90- and 120-degree planning to stacking panels and custom work surfaces, Action Office lets companies shape their offices so people can work at their best. Even as other systems have tried to copy it, none has matched the stability, the durability, or the ease and speed with which Action Office can be installed, moved, or changed. A smart buy and a proven performer, Action Office is ready for the long haul.



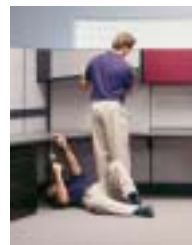
PANELS AND COMPONENTS

Panels, in a variety of heights, widths, and surface treatments, are the foundation of the Action Office system. Components, such as work surfaces and storage units, attach in 1-inch height increments, allowing them to be placed where they're most comfortable for the user. Height-adjustable work surfaces, keyboard trays, and other components support safe and productive computer use. With Herman Miller's Vary EasySM program, there's a virtually unlimited opportunity to customize work surface shapes and sizes.



FAST, EASY INSTALLATION

Independent installers confirm that no panel system is easier or quicker to install and reconfigure. A concise, versatile product vocabulary simplifies ordering, speeds installation, and streamlines inventory control.



MORE PLANNING OPTIONS

Two angles—90- and 120-degrees—give companies more planning choices, especially for achieving organic applications. Using open, glazed, and stacking panels creates an office landscape of varying heights and translucencies.

STRONG, LIGHTWEIGHT PANELS

Stress-skin construction makes Action Office panels strong enough to support loads that are four times the industry measurement for "heavy use."

CONTROLLED PRIVACY

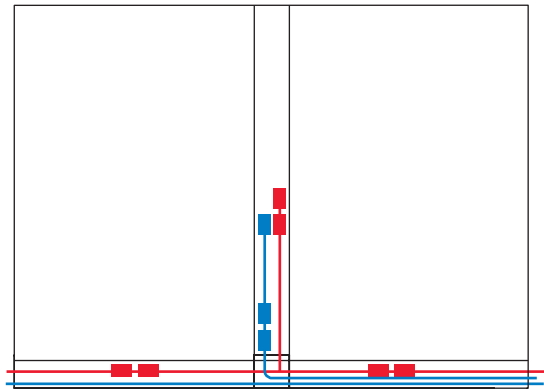
Fabric-covered and glass stacking panels allow privacy levels to be controlled and varied. The 14-inch-high panels stack up to two high and support overhead components.

CABLE LAY-IN CAPABILITY

A hinged base cover lets installers lay cables in, saving time and money during installation and reconfiguration. The cable channel accommodates a large bend radius. An optional top cap allows cables to run through the tops of panels.

PLENTY OF POWER AND DATA SUPPORT

Powered panels supply 4-circuit, 8-wire power, including 1 dedicated circuit for sensitive equipment. The system's circuit combinations include 3 general circuits and 1 dedicated circuit, 2 general and 2 isolated, or 1 general and 3 isolated. Action Office Series 2 panels with power handle 56 Category 5, 4-pair UTP cables at a 40 percent fill rate; without power, they accommodate 115 Category 5, 4-pair UTP cables. An optional metal barrier protects data from electrical interference.



DISTRIBUTION PATHS: POWER ■ DATA ■

12-YEAR, 3-SHIFT WARRANTY

Like all Herman Miller products, the Action Office system is durable for long-term performance and value. As a statement of our confidence in its quality, Action Office is covered by the Herman Miller Warranty—a straightforward promise that we stand behind that quality 100 percent. The 12-year, 3-shift warranty covers all standard elements and includes labor on all warranty work.

For more information about our products and services or to see a list of dealers, please visit us at www.HermanMiller.com or call (800) 851 1196.

© 2004 Herman Miller, Inc. Zeeland, Michigan Printed in U.S.A. O.MS2320-53

® **Herman Miller** and Action Office are among the registered trademarks of Herman Miller, Inc.

™ Flex-Edge is among the trademarks of Herman Miller, Inc.

SM Vary Easy is among the service marks of Herman Miller, Inc.